

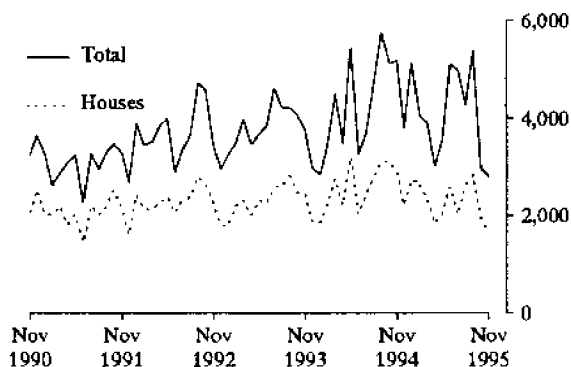
CATALOGUE NO. 8741.1

EMBARGOED UNTIL 11.30 AM 2 MAY 1996

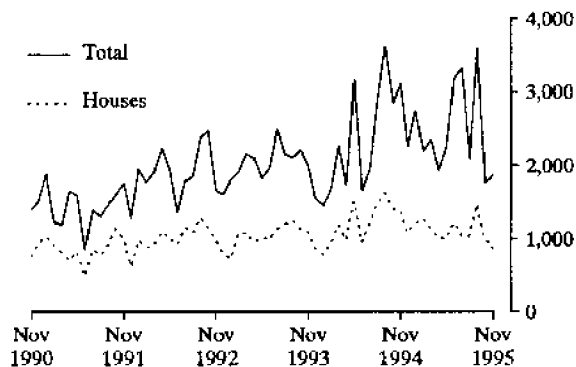
DWELLING UNIT COMMENCEMENTS REPORTED BY APPROVING AUTHORITIES NEW SOUTH WALES, NOVEMBER 1995

MAIN FEATURES

DWELLINGS COMMENCED IN NSW



DWELLINGS COMMENCED IN SYDNEY (SD)



- The total number of dwelling units reported as commenced in November 1995 was 2,799. The number of dwelling units reported as commenced for the Sydney Statistical Division (SSD) was 1,876.
- There were 1,597 private sector houses reported as commenced for New South Wales, with 838 of these in the SSD.
- The number of other residential buildings that were reported as commenced in New South Wales was 1,166.

INQUIRIES

- for more information about statistics in this publication and the availability of related unpublished statistics, contact Damian Sparkes on Adelaide (08) 237 7590 or any ABS State Office.
- for information about other ABS statistics and services please refer to the back of this publication.

TABLE 1. DWELLING UNITS COMMENCED, NSW
(Number of dwelling units)

Period	Private sector			Public sector			Total		
	Houses	Other residential buildings	Total	Houses	Other residential buildings	Total	Houses	Other residential buildings	Total
1993-94	28,427	15,861	44,288	763	1,832	2,595	29,190	17,693	46,883
1994-95	30,409	21,074	51,483	409	1,128	1,537	30,818	22,202	53,020
<i>July-November—</i>									
1994-95	14,168	9,499	23,667	228	530	758	14,396	10,029	24,425
1995-96	10,857	7,937	18,794	209	1,392	1,601	11,066	9,329	20,395
<i>1994—</i>									
November	2,860	2,145	5,005	52	120	172	2,912	2,265	5,177
December	2,188	1,494	3,682	27	87	114	2,215	1,581	3,796
<i>1995—</i>									
January	2,736	2,206	4,942	21	171	192	2,757	2,377	5,134
February	2,614	1,345	3,959	19	65	84	2,633	1,410	4,043
March	2,305	1,453	3,758	44	119	163	2,349	1,572	3,921
April	1,790	1,150	2,940	39	36	75	1,829	1,186	3,015
May	2,034	1,523	3,557	12	4	16	2,046	1,527	3,573
June	2,574	2,404	4,978	19	116	135	2,593	2,520	5,113
July	1,937	2,195	4,132	78	770	848	2,015	2,965	4,980
August	2,618	1,426	4,044	18	208	226	2,636	1,634	4,270
September	2,808	2,222	5,030	31	312	343	2,839	2,534	5,373
October	1,897	935	2,832	46	95	141	1,943	1,030	2,973
November	1,597	1,159	2,756	36	7	43	1,633	1,166	2,799

TABLE 2. DWELLING UNITS COMMENCED IN SELECTED STATISTICAL DIVISIONS
(Number of dwelling units)

Period	Private sector			Public sector			Total		
	Houses	Other residential buildings	Total	Houses	Other residential buildings	Total	Houses	Other residential buildings	Total
SYDNEY STATISTICAL DIVISION									
1993-94	12,622	10,295	22,917	355	1,198	1,553	12,977	11,493	24,470
1994-95	14,710	15,678	30,388	274	648	922	14,984	16,326	31,310
<i>1994—</i>									
November	1,347	1,680	3,027	26	59	85	1,373	1,739	3,112
December	1,048	1,141	2,189	24	50	74	1,072	1,191	2,263
<i>1995—</i>									
January	1,200	1,445	2,645	11	84	95	1,211	1,529	2,740
February	1,241	936	2,177	14	10	24	1,255	946	2,201
March	1,110	1,113	2,223	30	113	143	1,140	1,226	2,366
April	990	882	1,872	22	34	56	1,012	916	1,928
May	985	1,258	2,243	9	—	9	994	1,258	2,252
June	1,211	1,920	3,131	12	46	58	1,223	1,966	3,189
July	988	1,818	2,806	40	484	524	1,028	2,302	3,330
August	1,027	934	1,961	9	126	135	1,036	1,060	2,096
September	1,447	1,931	3,378	20	203	223	1,467	2,134	3,601
October	956	721	1,677	37	47	84	993	768	1,761
November	838	1,010	1,848	21	7	28	859	1,017	1,876

TABLE 2. DWELLING UNITS COMMENCED IN SELECTED STATISTICAL DIVISIONS—*continued*
(Number of dwelling units)

Period	Private sector			Public sector			Total		
	Houses	Other residential buildings	Total	Houses	Other residential buildings	Total	Houses	Other residential buildings	Total
HUNTER STATISTICAL DIVISION									
1993-94	3,812	1,889	5,701	116	109	225	3,928	1,998	5,926
1994-95	3,700	1,550	5,250	40	246	286	3,740	1,796	5,536
1994—									
November	378	146	524	11	39	50	389	185	574
December	290	107	397	—	—	—	290	107	397
1995—									
January	400	372	772	—	—	—	400	372	772
February	356	121	477	2	47	49	358	168	526
March	267	124	391	3	—	3	270	124	394
April	150	49	199	13	2	15	163	51	214
May	200	35	235	1	—	1	201	35	236
June	316	86	402	3	44	47	319	130	449
July	275	88	363	12	83	95	287	171	458
August	379	145	524	1	10	11	380	155	535
September	230	83	313	7	46	53	237	129	366
October	214	70	284	—	—	—	214	70	284
November	172	49	221	14	—	14	186	49	235
ILLAWARRA STATISTICAL DIVISION									
1993-94	2,319	801	3,120	65	135	200	2,384	936	3,320
1994-95	2,874	1,055	3,929	5	65	70	2,879	1,095	3,974
1994—									
November	366	102	468	—	—	—	366	102	468
December	254	93	347	—	35	35	254	128	382
1995—									
January	260	143	403	—	3	3	260	146	406
February	233	36	269	—	—	—	233	36	269
March	286	76	362	3	2	5	289	78	367
April	138	44	182	—	—	—	138	44	182
May	135	42	177	—	—	—	135	42	177
June	135	44	179	—	25	25	135	44	179
July	149	154	303	2	86	88	151	240	391
August	198	57	255	—	16	16	198	57	255
September	438	105	543	—	34	34	438	139	577
October	187	68	255	—	38	38	187	106	293
November	156	32	188	—	—	—	156	32	188
BALANCE OF NEW SOUTH WALES									
1993-94	9,674	2,876	12,550	227	390	617	9,901	3,266	13,167
1994-95	9,125	2,791	11,916	90	194	284	9,215	2,985	12,200
1994—									
November	769	217	986	15	22	37	784	239	1,023
December	596	153	749	3	2	5	599	155	754
1995—									
January	876	246	1,122	10	84	94	886	330	1,216
February	784	252	1,036	3	8	11	787	260	1,047
March	642	140	782	8	4	12	650	144	794
April	512	175	687	4	—	4	516	175	691
May	714	188	902	2	4	6	716	192	908
June	912	354	1,266	4	26	30	916	380	1,296
July	525	135	660	24	117	141	549	252	801
August	1,014	290	1,304	8	72	80	1,022	362	1,384
September	693	103	796	4	29	33	697	132	829
October	540	76	616	9	10	19	549	86	635
November	431	68	499	1	—	1	432	68	500

TABLE 3. HOUSES COMMENCED, BY MATERIAL OF OUTER WALLS, NSW

<i>Period</i>	<i>Double brick (a)</i>	<i>Brick veneer</i>	<i>Fibre cement</i>	<i>Timber</i>	<i>Other and not stated</i>	<i>Total</i>
PRIVATE SECTOR						
1993-94	3,797	21,003	1,067	1,857	703	28,427
1994-95	4,067	22,700	1,054	1,829	759	30,409
<i>1994—</i>						
November	357	2,146	93	190	74	2,860
December	322	1,571	89	149	57	2,188
<i>1995—</i>						
January	323	2,090	107	138	78	2,736
February	367	1,983	79	126	59	2,614
March	327	1,729	72	131	46	2,305
April	279	1,283	72	113	43	1,790
May	337	1,447	71	135	44	2,034
June	431	1,811	90	179	63	2,574
July	274	1,469	45	108	41	1,937
August	434	1,910	73	134	67	2,618
September	354	2,065	108	149	132	2,808
October	272	1,355	77	112	81	1,897
November	212	1,107	67	89	122	1,597
PUBLIC SECTOR						
1993-94	87	648	1	5	22	763
1994-95	39	356	3	2	9	409
<i>1994—</i>						
November	4	48	—	—	—	52
December	3	24	—	—	—	27
<i>1995—</i>						
January	4	15	—	—	2	21
February	2	17	—	—	—	19
March	2	42	—	—	—	44
April	—	39	—	—	—	39
May	1	11	—	—	—	12
June	9	9	1	—	—	19
July	10	64	—	2	2	78
August	3	14	1	—	—	18
September	5	25	—	1	—	31
October	4	38	1	1	2	46
November	2	34	—	—	—	36
TOTAL						
1993-94	3,884	21,651	1,068	1,862	725	29,190
1994-95	4,106	23,056	1,057	1,831	768	30,818
<i>1994—</i>						
November	361	2,194	93	190	74	2,912
December	325	1,595	89	149	57	2,215
<i>1995—</i>						
January	327	2,105	107	138	80	2,757
February	369	2,000	79	126	59	2,633
March	329	1,771	72	131	46	2,349
April	279	1,322	72	113	43	1,829
May	338	1,458	71	135	44	2,046
June	440	1,820	91	179	63	2,593
July	284	1,533	45	110	43	2,015
August	437	1,924	74	134	67	2,636
September	359	2,090	108	150	132	2,839
October	276	1,393	78	113	83	1,943
November	214	1,141	67	89	122	1,633

(a) Includes house constructed with outer walls of stone or concrete.

TABLE 4. HOUSES COMMENCED IN STATISTICAL DIVISIONS

Statistical division	October 1995					November 1995						
	Double brick (a)	Brick veneer	Fibre cement	Timber	Other and not stated	Total	Double brick (a)	Brick veneer	Fibre cement	Timber	Other and not stated	Total
PRIVATE SECTOR												
Sydney	153	728	4	31	40	956	100	623	15	28	72	838
Hunter	12	175	9	15	3	214	20	117	8	8	19	172
Illawarra	6	152	11	14	4	187	7	136	5	5	3	156
Richmond — Tweed	5	65	2	10	2	84	11	53	2	15	2	83
Mid-North Coast	19	78	18	10	7	132	11	74	3	14	5	107
Northern	13	10	4	2	7	36	5	2	5	1	2	15
North Western	5	29	2	2	1	39	—	19	3	1	1	24
Central West	20	38	11	5	2	76	12	25	8	7	3	55
South Eastern	18	26	8	12	6	70	22	27	8	8	5	70
Murrumbidgee	12	17	7	—	4	40	15	14	7	1	5	42
Murray	9	37	1	11	4	62	8	17	3	2	5	35
Far West	—	—	—	—	1	1	—	—	—	—	—	—
New South Wales	272	1,355	77	112	81	1,897	211	1,107	67	90	122	1,597
PUBLIC SECTOR												
Sydney	1	34	—	—	2	37	2	19	—	—	—	21
Hunter	—	—	—	—	—	—	—	14	—	—	—	14
Illawarra	—	—	—	—	—	—	—	—	—	—	—	—
Richmond — Tweed	—	—	—	—	—	—	—	—	—	—	—	—
Mid-North Coast	—	—	—	—	—	—	—	1	—	—	—	1
Northern	—	—	—	—	—	—	—	—	—	—	—	—
North Western	—	1	—	1	—	2	—	—	—	—	—	—
Central West	3	—	1	—	—	4	—	—	—	—	—	—
South Eastern	—	—	—	—	—	—	—	—	—	—	—	—
Murrumbidgee	—	—	—	—	—	—	—	—	—	—	—	—
Murray	—	3	—	—	—	3	—	—	—	—	—	—
Far West	—	—	—	—	—	—	—	—	—	—	—	—
New South Wales	4	38	1	1	2	46	2	34	—	—	—	36
TOTAL												
Sydney	154	762	4	31	42	993	102	642	15	28	72	859
Hunter	12	175	9	15	3	214	20	131	8	8	19	186
Illawarra	6	152	11	14	4	187	7	136	5	5	3	156
Richmond — Tweed	5	65	2	10	2	84	11	53	2	15	2	83
Mid-North Coast	19	78	18	10	7	132	11	75	3	14	5	108
Northern	13	10	4	2	7	36	5	2	5	1	2	15
North Western	5	30	2	3	1	41	—	19	3	1	1	24
Central West	23	38	12	5	2	80	12	25	8	7	3	55
South Eastern	18	26	8	12	6	70	22	27	8	8	5	70
Murrumbidgee	12	17	7	—	4	40	15	14	7	1	5	42
Murray	9	40	1	11	4	65	8	17	3	2	5	35
Far West	—	—	—	—	1	1	—	—	—	—	—	—
New South Wales	276	1,393	78	113	83	1,943	213	1,141	67	90	122	1,633

(a) Includes houses constructed with outer walls of stone or concrete.

TABLE 5. NEW DWELLING UNITS COMMENCED IN OTHER RESIDENTIAL BUILDINGS, BY TYPE IN STATISTICAL DIVISIONS
November 1995

Statistical division	Semi-detached, row or terrace houses, townhouses, etc. of			Flats, units or apartments in a building of				Unknown or not stated	Total
	1 storey	2 or more storeys	Total	1-2 storeys	3 storeys	4 or more storeys	Total		
NUMBER									
Sydney	209	270	479	67	52	419	538	—	1,017
Hunter	32	10	42	4	3	—	7	—	49
Illawarra	12	16	28	4	—	—	4	—	32
Richmond — Tweed	6	—	6	22	—	—	22	—	28
Mid North Coast	13	—	13	5	—	—	5	—	18
Northern	—	—	—	—	—	—	—	—	—
North Western	—	—	—	—	—	—	—	—	—
Central West	—	—	—	—	—	—	—	—	—
South Eastern	8	4	12	—	—	—	—	—	12
Murrumbidgee	10	—	10	—	—	—	—	—	10
Murray	—	—	—	—	—	—	—	—	—
Far West	—	—	—	—	—	—	—	—	—
New South Wales	290	300	590	102	55	419	576	—	1,166
VALUE (\$'000)									
Sydney	16,803	26,364	43,167	9,480	6,067	66,576	82,123	—	125,290
Hunter	2,224	942	3,166	451	500	—	951	—	4,117
Illawarra	701	1,280	1,981	300	—	—	300	—	2,281
Richmond — Tweed	440	—	440	1,505	—	—	1,505	—	1,945
Mid North Coast	815	—	815	210	—	—	210	—	1,025
Northern	—	—	—	—	—	—	—	—	—
North Western	—	—	—	—	—	—	—	—	—
Central West	—	—	—	—	—	—	—	—	—
South Eastern	848	370	1,218	—	—	—	—	—	1,218
Murrumbidgee	540	—	540	—	—	—	—	—	540
Murray	—	—	—	—	—	—	—	—	—
Far West	—	—	—	—	—	—	—	—	—
New South Wales	22,371	28,957	51,328	11,946	6,567	66,576	85,089	—	136,416

TABLE 6. DWELLING UNITS COMMENCED BY TYPE OF RESIDENTIAL BUILDING IN STATISTICAL LOCAL AREAS
(Number of dwelling units)

Statistical area	1995																
	Houses						Other residential buildings						Total				
	Jun.	Jul.	Aug.	Sep.	Oct.	Nov.	Jun.	Jul.	Aug.	Sep.	Oct.	Nov.					
SYDNEY STATISTICAL DIVISION																	
Botany (A)	2	4	3	5	1	1	—	—	—	—	—	—	2	4	3	5	1
Leichhardt (A)	2	8	2	—	2	1	13	171	—	—	138	—	144	15	179	2	138
Marrickville (A)	—	4	1	2	—	—	73	24	2	48	—	—	—	73	28	3	50
South Sydney (C)	3	1	2	—	—	1	90	218	34	24	24	12	423	93	219	36	24
Sydney (C)—Inner & Remainder	—	—	—	—	—	—	408	445	—	371	—	—	—	408	445	—	371
Inner Sydney SSD	7	17	8	7	3	3	584	858	36	581	12	567	591	875	44	588	15
Randwick (A)	11	9	9	16	12	11	45	34	75	32	24	28	56	43	84	48	39
Waverley (A)	1	—	3	4	1	—	—	6	19	16	12	2	1	6	22	20	13
Woolahura (A)	8	3	3	4	2	2	—	15	—	28	—	—	8	18	3	32	2
Eastern Suburbs SSD	20	12	15	24	15	13	45	55	94	76	36	30	65	67	109	100	51
Hurstville (C)	11	9	14	5	6	5	97	50	56	56	42	8	108	59	70	61	48
Kogarah (A)	—	22	16	40	7	7	—	106	13	20	16	13	—	128	29	60	23
Rockdale (A)	7	11	8	9	5	8	10	17	21	12	76	2	17	28	29	21	81
Sutherland Shire (A)	49	42	24	155	50	25	125	67	9	106	61	77	174	109	33	261	111
St George — Sutherland SSD	67	84	62	209	68	45	232	240	99	194	195	100	299	324	161	403	263
Bankstown (C)	22	18	21	28	15	23	85	135	92	81	48	25	107	153	113	109	63
Canterbury (A)	26	9	4	1	3	—	134	30	20	19	9	—	160	39	24	20	12
Canterbury — Bankstown SSD	48	27	25	29	18	23	219	165	112	100	57	25	267	192	137	129	75
Fairfield (C)	27	80	33	18	15	5	12	217	21	33	52	8	39	297	54	51	67
Liverpool (C)	126	261	124	130	193	133	46	106	20	33	14	29	172	367	144	163	207
Fairfield — Liverpool SSD	153	341	157	148	208	138	58	323	41	66	66	37	211	664	198	214	274
Camden (A)	32	—	129	31	61	44	—	—	2	—	—	—	32	—	131	31	61
Campbelltown (C)	73	47	29	31	35	52	12	20	15	11	2	14	85	67	44	42	37
Wollondilly (A)	22	23	24	23	20	24	—	4	2	—	2	—	22	27	26	23	22
Outer South Western Sydney SSD	127	70	182	85	116	120	12	24	19	11	4	14	139	94	201	96	120
Ashfield (A)	1	—	2	1	7	—	8	—	—	46	2	—	9	—	2	47	9
Burwood (A)	—	2	8	1	2	2	2	—	48	—	—	—	2	2	56	1	2
Concord (A)	3	1	—	2	2	4	—	8	—	16	12	16	3	9	—	18	14
Drummoyne (A)	9	8	3	4	3	3	37	17	26	8	4	2	46	25	29	12	7
Strathfield (A)	15	3	5	—	1	2	4	2	—	—	8	—	19	5	—	—	9
Inner Western Sydney SSD	28	14	18	8	15	11	51	27	74	70	26	18	79	41	92	78	41

TABLE 6. DWELLING UNITS COMMENCED BY TYPE OF RESIDENTIAL BUILDING IN STATISTICAL LOCAL AREAS—continued
(Number of dwelling units)

Statistical area	1995																	
	Houses						Other residential buildings						Total					
	Jun.	Jul.	Aug.	Sep.	Oct.	Nov.	Jun.	Jul.	Aug.	Sep.	Oct.	Nov.	Jun.	Jul.	Aug.	Sep.	Oct.	Nov.
SYDNEY STATISTICAL DIVISION—continued																		
Auburn (A)	—	—	—	32	5	12	—	4	—	73	14	2	—	4	—	105	19	14
Holroyd (A)	3	7	5	8	6	—	45	36	17	4	2	2	48	43	22	12	8	2
Parramatta (C)	47	24	8	12	4	4	169	66	17	29	6	14	216	90	25	41	10	18
Central	—	—	—	—	—	—	—	—	—	—	—	—	—	—	—	—	—	—
Western Sydney SSD	50	31	13	52	15	16	214	106	34	106	22	18	264	137	47	158	37	34
Blue Mountains (C)	34	22	31	34	24	18	4	2	14	21	—	2	38	24	45	55	24	20
Hawkesbury (C)	5	74	21	26	20	15	—	38	40	9	6	4	5	112	61	35	26	19
Pennrith (C)	41	13	86	88	68	51	5	12	65	121	47	4	46	25	151	209	115	55
Outer Western Sydney SSD	80	109	138	148	112	84	9	52	119	151	53	10	89	161	257	299	165	94
Baulkham Hills (A)	70	42	55	29	48	33	25	35	23	23	26	16	95	77	78	52	74	49
Blacktown (C)	173	80	131	230	131	100	62	22	22	137	61	30	235	102	153	367	192	130
Blacktown— Baulkham Hills SSD	243	122	186	259	179	133	87	57	45	160	87	46	330	179	231	419	266	179
Hunter's Hill (A)	3	—	2	2	—	2	2	—	3	11	4	—	5	—	5	13	4	2
Lane Cove (A)	8	5	10	5	2	4	48	20	6	—	2	4	56	25	16	5	4	8
Mosman (A)	4	2	—	2	1	—	6	7	27	11	4	—	10	9	27	13	5	—
North Sydney (A)	2	2	—	2	2	2	58	—	6	22	—	—	60	2	6	24	2	2
Ryde (C)	24	11	25	16	7	8	34	61	46	38	19	18	58	72	71	54	26	26
Willoughby (C)	5	8	11	20	3	13	11	25	6	330	20	22	16	33	17	350	23	35
Lower Northern Sydney SSD	46	28	48	47	15	29	159	113	94	412	49	44	205	141	142	459	64	73
Hornsby (A)	55	118	56	56	48	56	111	118	72	78	78	17	166	236	128	134	126	73
Ku-ring-gai (A)	11	5	29	10	7	6	—	—	53	4	10	14	11	5	82	14	17	20
Hornsby—Ku-ring-gai SSD	66	123	85	66	55	62	111	118	125	82	88	31	177	241	210	148	143	93
Manly (A)	4	1	—	1	3	—	6	2	2	2	4	4	10	3	2	3	7	4
Pittwater (A)	3	16	13	15	7	12	—	10	6	4	—	2	3	26	19	19	7	14
Warringah (A)	19	28	21	27	30	14	10	61	20	8	52	10	29	89	41	35	82	24
Northern Beaches SSD	26	45	34	43	40	26	16	73	28	14	56	16	42	118	62	57	96	42
Gosford (C)	102	—	63	155	56	95	151	47	138	18	7	46	253	47	201	173	63	141
Wyong (A)	160	5	2	187	78	61	18	44	2	93	10	15	178	49	4	280	88	76
Gosford—Wyong SSD	262	5	65	342	134	156	169	91	140	111	17	61	431	96	205	453	151	217
SYDNEY SD	1,223	1,028	1,036	1,467	993	859	1,966	2,302	1,060	2,134	768	1,017	3,189	3,330	2,096	3,601	1,761	1,876

TABLE 6. DWELLING UNITS COMMENCED BY TYPE OF RESIDENTIAL BUILDING IN STATISTICAL LOCAL AREAS—continued
(Number of dwelling units)

Statistical area	Houses												Other residential buildings												Total																				
	1995												1995																																
	Jun.	Jul.	Aug.	Sep.	Oct.	Nov.	Jun.	Jul.	Aug.	Sep.	Oct.	Nov.	Jun.	Jul.	Aug.	Sep.	Oct.	Nov.	Jun.	Jul.	Aug.	Sep.	Oct.	Nov.																					
HUNTER STATISTICAL DIVISION																																													
Cessnock (C)	12	36	16	43	13	10	2	4	4	—	4	—	4	—	—	6	14	40	16	47	13	16	68	92	155	59	77	62	26	72	49	17	10	11	11	4	6	14	94	164	204	76	87	73	
Lake Macquarie (C)	67	31	42	22	15	35	4	2	2	11	—	—	—	—	—	4	71	33	53	22	15	39	41	43	40	33	30	13	46	69	50	87	14	11	87	112	90	120	47	44	24				
Mainland (C)	37	6	80	34	37	38	32	4	4	39	13	15	13	15	13	13	69	10	119	47	52	51	225	208	333	191	172	158	170	151	149	121	39	45	335	359	482	312	211	203					
Newcastle (C) — Inner & Remainder	3	6	3	8	7	7	—	—	—	—	—	—	—	—	—	—	3	6	3	8	7	7	Port Stephens (A)	5	1	1	4	1	2	—	—	—	—	—	—	—	—	—	5	1	1	4	5	1	2
Newcastle SSD	30	43	20	17	24	11	12	20	—	—	—	—	—	—	—	4	42	63	20	23	53	15	Merrima (A)	5	—	—	1	—	—	—	—	—	—	—	—	—	—	—	5	—	—	1	—	—	—
Dungog (A)	—	—	3	—	—	—	—	—	—	—	—	—	—	—	—	—	—	—	—	—	—	—	Great Lakes (A)	—	—	—	—	—	—	—	—	—	—	—	—	—	—	—	—	—	—	—	—	—	—
Gloucester (A)	4	5	5	3	5	5	—	—	—	—	—	—	—	—	—	—	4	5	5	3	5	5	Murrumbidgee (A)	4	4	11	2	2	2	—	—	—	—	—	—	—	—	—	4	4	11	6	8	2	2
Muswellbrook (A)	4	11	2	6	2	2	—	—	—	—	—	—	—	—	—	—	4	11	6	8	2	2	Murrumbidgee (A)	4	11	2	6	2	2	—	—	—	—	—	—	—	—	—	4	4	11	6	8	2	2
Scotsdale (A)	43	13	13	7	3	1	8	—	—	2	—	2	—	—	—	—	51	13	15	7	5	1	Scone (A)	43	13	13	7	3	1	8	—	—	2	—	2	—	—	—	51	13	15	7	5	1	
Singleton (A)	94	79	47	46	42	28	20	20	20	6	8	8	31	4	114	99	53	53	54	73	73	32	Singleton (A)	94	79	47	46	42	28	20	20	20	6	8	8	31	4	114	99	53	54	73	73	32	
Hunter SD Balance SSD	319	287	380	237	214	186	130	171	155	129	70	49	449	458	535	366	284	235	Hunter SD Balance SSD	319	287	380	237	214	186	130	171	155	129	70	49	449	458	535	366	284	235								
ILLAWARRA STATISTICAL DIVISION																																													
Kiama (A)	16	—	25	4	9	15	4	4	8	5	—	—	—	—	—	—	20	—	33	9	9	15	Shellharbour (A)	19	19	27	20	34	18	11	2	5	18	38	4	30	21	32	38	72	22	22			
Shellharbour (A)	27	106	84	117	56	69	21	199	30	108	62	22	48	305	114	225	91	118	91	118	91	128	Wollongong (C)	62	125	136	141	99	102	36	201	43	131	100	26	98	326	179	272	199	128				
Wollongong (C)	48	2	42	264	65	44	8	25	14	8	6	6	56	27	56	272	71	50	50	71	50	50	Wollongong SSD	48	2	42	264	65	44	8	25	14	8	6	6	56	27	56	272	71	50	50	71	50	50
Shoalhaven (C)	25	24	20	33	23	10	—	14	—	—	—	—	—	—	—	—	25	38	20	33	23	10	Shoalhaven (C)	25	24	20	33	23	10	—	14	—	—	—	—	—	—	—	25	38	20	33	23	10	10
Wingecarribee (A)	73	26	62	297	88	54	8	39	14	8	6	6	6	65	76	305	94	60	60	94	60	60	Wingecarribee (A)	73	26	62	297	88	54	8	39	14	8	6	6	65	76	305	94	60	60	94	60	60	
Illawarra SD Balance SSD	135	151	198	438	187	156	44	240	57	139	106	32	179	391	255	577	293	188	188	293	188	188	Illawarra SD Balance SSD	135	151	198	438	187	156	44	240	57	139	106	32	179	391	255	577	293	188	188	188		

TABLE 6. DWELLING UNITS COMMENCED BY TYPE OF RESIDENTIAL BUILDING IN STATISTICAL LOCAL AREAS—continued
(Number of dwelling units)

Statistical area	1995												Total				
	Houses						Other residential buildings										
	Jun.	Jul.	Aug.	Sep.	Oct.	Nov.	Jun.	Jul.	Aug.	Sep.	Oct.	Nov.					
RICHMOND—TWEED STATISTICAL DIVISION																	
Tweed (A) Pt A	103	18	22	29	27	13	72	21	71	6	8	24	175	39	93	35	37
Tweed Heads SSD	103	18	22	29	27	13	72	21	71	6	8	24	175	39	93	35	37
Ballina (A)	30	20	24	22	20	18	23	—	25	11	15	—	53	20	49	33	18
Byron (A)	38	15	36	12	10	17	21	8	24	—	—	2	59	23	60	12	19
Casino (A)	7	—	1	5	2	—	—	—	—	—	2	—	7	—	1	5	—
Kyogle (A)	8	6	9	4	3	4	2	—	5	—	—	—	10	6	14	4	4
Lismore (C)	26	18	17	12	13	11	2	11	—	2	2	—	28	29	17	14	11
Richmond River (A)	9	7	5	2	4	9	—	—	—	—	—	2	9	7	5	2	11
Tweed (A) Pt B	51	11	12	6	5	11	22	11	—	2	5	—	73	22	12	8	11
Richmond—Tweed SD Balance SSD	169	77	104	63	57	70	70	30	54	15	24	4	239	107	158	78	74
RICHMOND—TWEED SD	272	95	126	92	84	83	142	51	125	21	32	28	414	146	251	113	111
MID-NORTH COAST STATISTICAL DIVISION																	
Bellingen (A)	22	2	11	10	9	6	2	—	—	2	—	—	24	2	11	12	6
Coffs Harbour (C)	51	43	39	38	28	17	22	52	11	20	—	4	73	95	50	58	21
Copmanhurst (A)	3	1	4	—	1	1	—	—	—	—	—	—	3	1	4	—	1
Grafton (C)	15	5	4	5	5	2	20	4	2	2	—	—	35	9	6	7	2
Maclean (A)	11	6	13	13	14	9	4	—	6	4	—	2	15	6	19	17	11
Nambucca (A)	6	6	10	4	6	6	2	—	10	—	—	—	8	6	20	4	6
Nymboida (A)	3	7	2	3	4	4	—	—	—	—	—	—	3	7	2	3	4
Ullmarra (A)	5	1	6	4	6	3	—	—	—	—	—	—	5	1	6	4	3
Clarence SSD	116	71	89	77	73	48	50	56	29	28	—	6	166	127	118	105	54
Greater Taree (C)	47	25	11	12	11	15	4	6	—	4	—	5	51	31	11	16	20
Hastings (A)	2	2	220	35	28	35	14	17	47	—	18	7	16	19	267	35	42
Kempsey (A)	23	10	14	10	20	10	7	2	2	2	—	—	30	12	16	12	10
Hastings SSD	72	37	245	57	59	60	25	25	49	6	18	12	97	62	294	63	72
MID—NORTH COAST SD	188	108	334	134	132	108	75	81	78	34	18	18	263	189	412	168	126

TABLE 6. DWELLING UNITS COMMENCED BY TYPE OF RESIDENTIAL BUILDING IN STATISTICAL LOCAL AREAS —continued
(Number of dwelling units)

Statistical area	1995																		
	Houses						Other residential buildings						Total						
	Jun.	Jul.	Aug.	Sep.	Oct.	Nov.	Jun.	Jul.	Aug.	Sep.	Oct.	Nov.	Jun.	Jul.	Aug.	Sep.	Oct.	Nov.	
NORTHERN STATISTICAL DIVISION																			
Barraba (A)	2	—	—	1	—	1	—	—	—	—	—	—	—	—	—	—	—	—	1
Bingara (A)	2	—	—	1	—	—	—	—	—	—	—	—	—	—	—	—	—	—	—
Gunnedah (A)	—	1	1	2	2	2	—	—	4	—	—	—	—	—	—	—	—	—	2
Inverell (A) Pt A	2	—	2	—	—	—	—	—	—	—	—	—	—	—	—	—	—	—	—
Mamilla (A)	2	1	—	—	—	—	—	—	—	—	—	—	—	—	—	—	—	—	—
Nundle (A)	—	—	—	—	1	—	—	—	—	—	—	—	—	—	—	—	—	—	—
Parry (A)	7	2	6	3	6	2	—	—	—	—	—	—	—	—	—	—	—	—	2
Quirindi (A)	2	3	4	—	—	1	—	—	—	—	—	—	—	—	—	—	—	—	1
Tamworth (C)	—	53	7	38	2	—	—	9	2	11	—	—	—	—	—	—	—	—	—
Yallaroi (A)	—	2	1	1	—	—	—	—	—	—	—	—	—	—	—	—	—	—	—
Northern Slopes SSD	17	62	21	46	13	6	—	9	6	11	—	—	—	—	—	—	—	—	6
Armidale (C)	6	4	10	—	1	2	—	—	3	—	—	—	—	—	—	—	—	—	2
Dumaresq (A)	1	1	3	4	6	—	—	—	—	—	—	—	—	—	—	—	—	—	—
Glen Innes (A)	3	3	2	3	1	—	—	—	2	—	—	—	—	—	—	—	—	—	—
Guyra (A)	1	—	1	1	1	1	—	—	—	—	—	—	—	—	—	—	—	—	—
Inverell (A) Pt B	8	4	3	3	2	—	—	—	—	—	—	—	—	—	—	—	—	—	—
Severn (A)	—	—	1	1	3	3	—	—	—	—	—	—	—	—	—	—	—	—	—
Tenterfield (A)	3	3	5	7	4	1	—	—	—	—	—	—	—	—	—	—	—	—	—
Uralla (A)	5	1	—	2	2	—	—	—	—	—	—	—	—	—	—	—	—	—	—
Walcha (A)	1	—	—	1	1	1	—	—	—	—	—	—	—	—	—	—	—	—	—
Northern Tablelands SSD	28	16	25	25	21	8	—	2	5	—	—	—	—	—	—	—	—	—	8
Moree Plains (A)	4	2	1	2	2	—	—	—	—	—	—	—	—	—	—	—	—	—	—
Narrabri (A)	7	2	3	5	—	1	—	—	2	—	—	—	—	—	—	—	—	—	—
North Central Plains SSD	11	4	4	7	7	1	—	—	2	—	—	—	—	—	—	—	—	—	—
NORTHERN SD	56	82	50	78	36	15	2	9	13	11	4	—	—	58	91	63	89	40	15

TABLE 6. DWELLING UNITS COMMENCED BY TYPE OF RESIDENTIAL BUILDING IN STATISTICAL LOCAL AREAS —continued
(Number of dwelling units)

Statistical area	Houses												Other residential buildings												Total
	1995												1995												
	Jan.	Feb.	Mar.	Apr.	May	Jun.	Jul.	Aug.	Sep.	Oct.	Nov.	Dec.	Jan.	Feb.	Mar.	Apr.	May	Jun.	Jul.	Aug.	Sep.	Oct.	Nov.	Dec.	
NORTH WESTERN STATISTICAL DIVISION																									
Coolah (A)	—	1	—	6	2	2	2	2	2	—	—	—	—	—	—	—	—	—	—	—	—	—	—	—	—
Coonabarabran (A)	3	—	—	—	3	1	—	—	—	—	—	—	—	—	—	—	—	—	—	—	—	—	—	—	—
Dubbo (C)	32	1	—	26	18	21	18	18	24	2	—	—	—	—	—	—	—	—	—	—	—	—	—	—	—
Gilgandra (A)	—	—	—	3	1	2	—	—	2	—	—	—	—	—	—	—	—	—	—	—	—	—	—	—	—
Mudgee (A)	9	4	—	9	3	4	2	—	—	2	—	—	—	—	—	—	—	—	—	—	—	—	—	—	—
Narramine (A)	3	—	—	2	2	3	—	—	—	—	—	—	—	—	—	—	—	—	—	—	—	—	—	—	—
Wellington (A)	1	2	—	2	2	2	—	—	—	—	—	—	—	—	—	—	—	—	—	—	—	—	—	—	—
Central Macquarie SSD	48	8	—	48	31	35	20	26	26	4	—	—	—	—	—	—	—	—	—	—	—	—	—	—	—
Bogan (A)	1	2	—	—	1	2	—	—	—	—	—	—	—	—	—	—	—	—	—	—	—	—	—	—	—
Coonamble (A)	2	—	—	3	—	—	—	—	—	—	—	—	—	—	—	—	—	—	—	—	—	—	—	—	—
Walgett (A)	3	1	—	2	3	3	—	—	3	—	—	—	—	—	—	—	—	—	—	—	—	—	—	—	—
Warren (A)	2	—	—	2	—	—	—	—	2	—	—	—	—	—	—	—	—	—	—	—	—	—	—	—	—
Macquarie — Barwon SSD	8	3	—	7	4	5	—	—	5	—	—	—	—	—	—	—	—	—	—	—	—	—	—	—	—
Bourke (A)	—	1	—	—	3	—	—	—	—	—	—	—	—	—	—	—	—	—	—	—	—	—	—	—	—
Brewarrina (A)	1	—	—	—	—	—	—	—	—	—	—	—	—	—	—	—	—	—	—	—	—	—	—	—	—
Cobar (A)	—	5	—	4	5	1	—	—	—	—	—	—	—	—	—	—	—	—	—	—	—	—	—	—	—
Upper Darling SSD	1	6	—	4	8	1	—	—	—	—	—	—	—	—	—	—	—	—	—	—	—	—	—	—	—
NORTH WESTERN SD	57	17	—	59	43	41	24	20	31	4	—	4	—	—	—	—	—	—	—	—	—	—	—	—	24

TABLE 6. DWELLING UNITS COMMENCED BY TYPE OF RESIDENTIAL BUILDING IN STATISTICAL LOCAL AREAS—continued
(Number of dwelling units)

Statistical area	Houses												Other residential buildings												Total
	1995												1995												
	Jun.	Jul.	Aug.	Sep.	Oct.	Nov.	Jun.	Jul.	Aug.	Sep.	Oct.	Nov.	Jun.	Jul.	Aug.	Sep.	Oct.	Nov.							
CENTRAL WEST STATISTICAL DIVISION																									
Bathurst (C)	25	2	40	7	13	9	—	—	14	2	2	—	25	2	54	9	15	9							
Blayney (A) Pt A	3	—	5	3	2	2	—	—	—	—	—	—	3	—	5	3	2	2							
Cabaronne (A) Pt A	1	—	7	3	3	1	—	—	—	—	—	—	1	—	7	3	3	1							
Evans (A) Pt A	1	1	—	—	—	—	—	—	—	—	—	—	1	1	—	—	—	—							
Orange (C)	32	8	20	14	18	11	17	4	2	23	—	49	12	22	37	18	11	11							
Bathurst — Orange SSD	62	11	72	27	36	23	17	4	16	25	2	79	15	88	52	38	23	23							
Blayney (A) Pt B	2	—	—	—	2	1	—	—	—	—	—	2	—	—	—	—	2	1							
Cabaronne (A) Pt B	2	—	—	—	—	1	—	—	—	—	—	2	—	—	—	—	—	1							
Evans (A) Pt B	6	—	6	2	—	1	—	—	—	—	—	6	—	6	2	—	—	1							
Greater Lithgow (C)	7	9	9	13	14	9	—	—	—	—	2	7	9	9	13	16	9	9							
Oberon (A)	8	6	16	7	5	6	2	2	9	—	—	10	8	25	7	5	6	6							
Rylstone (A)	1	—	—	2	—	—	—	—	—	—	—	1	—	—	2	—	—	—							
Central Tablelands (excl. Bathurst — Orange) SSD	26	15	31	24	21	18	2	2	9	—	2	28	17	40	24	23	18	18							
Bland (A)	1	—	3	—	1	—	—	—	—	—	—	1	—	—	3	—	1	—							
Cabaronne (A) Pt C	7	—	9	3	2	3	—	—	—	—	—	7	—	9	3	2	3	3							
Cowra (A)	2	1	6	4	5	1	—	—	—	—	—	2	1	6	4	5	1	1							
Forbes (A)	2	2	—	6	5	2	—	2	2	—	—	2	2	4	2	6	2	2							
Lachlan (A)	—	—	2	—	1	2	—	—	—	—	—	—	—	—	2	—	1	2							
Parkes (A)	17	13	32	4	8	6	—	4	3	—	—	17	17	35	4	8	6	6							
Weddin (A)	1	2	—	—	1	—	—	—	—	—	—	1	2	—	—	1	—	—							
Lachlan SSD	30	18	52	17	23	14	—	6	5	—	—	30	24	57	17	23	14	14							
CENTRAL WEST SD	118	44	155	68	80	55	19	12	30	25	4	137	56	185	93	84	55	55							

TABLE 6. DWELLING UNITS COMMENCED BY TYPE OF RESIDENTIAL BUILDING IN STATISTICAL LOCAL AREAS—continued
(Number of dwelling units)

Statistical area	Houses												Other residential buildings												Total										
	1995												1995																						
	Jun.	Jul.	Aug.	Sep.	Oct.	Nov.	Jun.	Jul.	Aug.	Sep.	Oct.	Nov.	Jun.	Jul.	Aug.	Sep.	Oct.	Nov.																	
SOUTH EASTERN STATISTICAL DIVISION																																			
Queanbeyan (C)	9	6	25	17	8	8	2	6	9	—	—	11	12	34	17	8	8	9	6	25	17	8	8	2	6	9	—	—	11	12	34	17	8	8	
Queanbeyan SSD	9	6	25	17	8	8	2	6	9	—	—	11	12	34	17	8	8	9	6	25	17	8	8	2	6	9	—	—	11	12	34	17	8	8	
Boorowa (A)	2	—	3	3	1	—	—	—	—	—	—	2	—	3	3	—	—	2	—	3	3	1	—	—	—	—	—	—	—	—	—	—	—	—	
Crookwell (A)	4	4	2	5	—	1	3	—	—	—	—	7	4	2	5	—	—	4	4	2	5	—	—	7	4	2	5	—	—	—	—	—	—	—	
Goulburn (C)	7	—	51	6	7	17	—	—	72	—	—	7	—	—	—	—	7	—	51	6	7	17	—	—	—	—	—	—	—	—	—	—	—	—	
Gunning (A)	2	—	—	1	2	1	—	—	—	—	—	2	—	—	—	—	2	—	—	1	2	1	—	—	—	—	—	—	—	—	—	—	—	—	
Harden (A)	3	—	—	4	3	1	—	—	—	—	—	3	—	—	—	—	3	—	—	4	3	1	—	—	—	—	—	—	—	—	—	—	—	—	
Mulwaree (A)	5	2	4	4	3	3	2	—	—	—	—	7	2	4	4	—	5	2	4	4	3	3	2	—	—	—	—	—	—	—	—	—	—	—	
Tallaganda (A)	8	2	6	—	2	1	—	—	—	—	—	8	2	6	—	—	8	2	6	—	2	1	—	—	—	—	—	—	—	—	—	—	—	—	
Yarrowlumla (A)	14	—	3	8	3	4	—	—	—	—	—	14	—	3	8	—	14	—	3	8	3	4	—	—	—	—	—	—	—	—	—	—	—	—	
Yass (A)	7	2	6	7	6	6	2	—	—	—	—	9	2	6	7	—	7	2	6	7	6	6	2	—	—	—	—	—	—	—	—	—	—	—	
Young (A)	8	1	4	9	5	2	—	—	—	—	—	8	—	4	9	—	8	1	4	9	5	2	—	—	—	—	—	—	—	—	—	—	—	—	
Southern Tablelands (excl. Queanbeyan) SSD	60	11	79	47	32	36	7	—	74	—	2	67	11	153	47	34	42	60	11	79	47	32	36	7	—	74	—	2	67	11	153	47	34	42	
Bega Valley (A)	7	35	28	21	8	9	9	2	10	2	—	16	37	38	23	8	9	7	35	28	21	8	9	9	2	10	2	—	16	37	38	23	8	9	
Eurobodalla (A)	23	80	19	86	18	11	46	17	2	19	—	69	97	21	105	18	11	23	80	19	86	18	11	46	17	2	19	—	69	97	21	105	18	11	
Lower South Coast SSD	30	115	47	107	26	20	55	19	12	21	—	85	134	59	128	26	20	30	115	47	107	26	20	55	19	12	21	—	85	134	59	128	26	20	
Bombala (A)	1	—	—	3	—	—	—	—	—	—	—	1	—	—	3	—	—	1	—	—	3	—	—	—	—	—	—	—	—	—	—	—	—	—	—
Coonua—Monaro (A)	2	—	7	1	1	3	—	—	4	—	—	2	—	—	—	—	2	—	7	1	1	3	—	—	—	—	—	—	—	—	—	—	—	—	—
Snowy River (A)	2	3	1	9	3	3	—	—	—	2	—	2	3	1	11	3	9	2	3	1	9	3	3	—	—	—	—	—	—	—	—	—	—	—	—
Snowy SSD	5	3	8	13	4	6	—	—	4	2	—	6	5	12	15	4	12	5	3	8	13	4	6	—	—	—	—	—	—	—	—	—	—	—	—
SOUTH EASTERN SD	104	135	159	184	70	70	64	25	99	23	2	12	168	160	258	72	82	104	135	159	184	70	70	64	25	99	23	2	12	168	160	258	72	82	

TABLE 6. DWELLING UNITS COMMENCED BY TYPE OF RESIDENTIAL BUILDING IN STATISTICAL LOCAL AREAS—continued
(Number of dwelling units)

Statistical area	1995												Total				
	Houses						Other residential buildings										
	Jun.	Jul.	Aug.	Sep.	Oct.	Nov.	Jun.	Jul.	Aug.	Sep.	Oct.	Nov.					
MURRUMBIDGEE STATISTICAL DIVISION																	
Coolamon (A)	3	1	1	1	—	1	—	—	—	—	—	3	1	1	1	—	1
Cootamundra (A)	1	1	1	—	2	1	—	—	—	—	—	1	1	1	—	2	1
Gundagai (A)	1	1	1	—	—	4	—	—	—	—	—	1	1	1	—	—	4
Juaree (A)	4	—	3	2	2	2	6	—	—	—	—	10	—	3	2	2	2
Lockhart (A)	—	—	1	—	1	2	—	—	—	—	—	—	—	—	—	1	2
Narrandera (A)	3	3	3	1	1	1	—	—	—	—	—	3	3	3	1	1	1
Temora (A)	1	3	3	3	—	2	—	—	—	—	—	1	3	3	—	2	2
Tumut (A)	3	2	8	6	4	2	—	—	—	—	—	3	13	8	6	4	2
Wagga Wagga (C)	18	26	9	19	11	6	4	15	12	2	—	22	41	9	31	13	6
Central Murrumbidgee SSD	34	37	27	32	21	21	10	26	12	2	—	44	63	27	44	23	21
Carrathool (A)	1	—	1	1	—	2	—	—	—	—	—	1	—	1	1	—	2
Griffith (C)	40	4	25	10	10	14	25	4	—	2	—	65	8	34	10	12	16
Hay (A)	4	—	4	3	1	1	—	2	—	—	—	4	2	4	3	1	7
Leeton (A)	2	1	12	5	6	3	8	9	2	—	—	10	10	12	7	6	5
Murrumbidgee (A)	—	—	6	2	2	1	—	—	—	—	—	—	—	—	—	2	1
Lower Murrumbidgee SSD	47	5	48	21	19	21	33	15	2	2	—	80	20	59	23	21	31
MURRUMBIDGEE SD	81	42	75	53	40	42	43	41	14	4	10	124	83	86	67	44	52

TABLE 6. DWELLING UNITS COMMENCED BY TYPE OF RESIDENTIAL BUILDING IN STATISTICAL LOCAL AREAS—continued
(Number of dwelling units)

Statistical area	1995												Total								
	Houses						Other residential buildings														
	Jun.	Jul.	Aug.	Sep.	Oct.	Nov.	Jun.	Jul.	Aug.	Sep.	Oct.	Nov.									
	MURRAY STATISTICAL DIVISION																				
Albury (C)	10	7	9	19	34	9	6	2	—	2	—	—	—	—	—	16	9	9	21	46	9
Hume (A)	7	7	6	1	2	4	—	—	—	—	—	—	—	—	—	7	6	6	1	2	4
Albury SSD	17	7	15	20	36	13	6	2	—	2	—	—	—	—	—	23	9	15	22	48	13
Corowa (A)	7	5	10	2	5	2	—	—	—	—	—	—	—	—	—	7	5	10	2	5	2
Culcairn (A)	1	—	2	1	—	—	—	—	—	—	—	—	—	—	—	1	—	2	1	—	—
Holbrook (A)	2	—	—	—	—	1	—	—	—	—	—	—	—	—	—	2	—	—	—	—	1
Tumbarumba (A)	—	2	4	1	1	3	—	—	—	—	—	—	—	—	—	2	2	4	1	1	3
Urana (A)	1	1	—	—	—	—	—	—	—	—	—	—	—	—	—	1	1	—	—	—	—
Upper Murray (excl. Albury) SSD	11	8	16	4	6	6	—	—	—	—	—	—	—	—	—	11	8	16	4	6	6
Berrigan (A)	—	—	12	8	7	2	—	—	—	—	—	—	—	—	—	—	—	12	8	7	2
Conargo (A)	—	—	—	—	—	—	—	—	—	—	—	—	—	—	—	—	—	—	—	—	—
Dentiquan (A)	—	1	1	3	3	1	—	—	—	—	—	—	—	—	—	—	1	1	3	6	1
Jerilderie (A)	—	—	2	1	—	—	—	—	—	—	—	2	—	—	—	—	—	4	1	—	—
Murray (A)	6	5	6	4	9	7	2	—	—	—	—	—	—	—	—	8	5	6	4	12	7
Wakool (A)	1	1	1	1	1	—	—	—	—	—	—	—	—	—	—	1	1	1	1	1	—
Windouran (A)	—	—	—	—	—	—	—	—	—	—	—	—	—	—	—	—	—	—	—	—	—
Central Murray SSD	7	7	22	17	20	10	2	—	—	—	—	2	—	—	—	9	7	24	17	26	10
Bairnald (A)	1	—	2	—	1	2	—	—	—	—	—	—	—	—	—	1	—	2	—	1	2
Wentworth (A)	3	2	8	3	2	4	7	—	—	—	—	—	—	—	—	10	2	8	3	2	4
Murray Darling SSD	4	2	10	3	3	6	7	—	—	—	—	—	—	—	—	11	2	10	3	3	6
MURRAY SD	39	24	63	44	65	35	15	2	2	2	18	2	2	18	—	54	26	65	46	83	35
	FAR WEST STATISTICAL DIVISION																				
Broken Hill (C)	1	—	1	1	1	—	—	—	—	—	—	—	—	—	—	1	—	1	1	1	—
Central Darling (A)	—	—	—	—	—	—	—	—	—	—	—	—	—	—	—	—	—	—	—	—	—
Unitcorp. Far West	—	2	—	—	—	—	—	—	—	2	—	—	—	—	—	—	2	—	—	—	—
FAR WEST SD	1	2	1	1	1	—	—	—	—	2	—	—	—	—	—	1	2	1	3	1	—
	NEW SOUTH WALES																				
NEW SOUTH WALES	2,593	2,015	2,636	2,839	1,943	1,633	2,520	2,965	1,634	2,534	1,030	1,166	5,113	4,980	4,270	5,373	2,973	2,799	2,973	2,799	—

EXPLANATORY NOTES

Introduction

This publication contains monthly details of the number of new dwelling units reported by approving authorities as having commenced. Data for statistical local areas are included.

Scope and coverage

2. The statistics were compiled from monthly reports, provided by local and other government authorities, of commencements of new houses and new other residential buildings for which:

- (a) building permits were issued by local government or other government authorities in areas subject to building control by those authorities; and
- (b) contracts were let or day labour work was authorised by Commonwealth, State, semi-government and local government authorities.
- (c) are valued at \$10,000 or more.

Major dwelling unit commencements in areas not subject to the normal administrative approval processes (e.g. buildings on remote mine sites) are also included.

3. The number of dwelling units created by alterations and additions to existing buildings and through the construction of new non-residential buildings is not included.

Comparability of statistics

4. Because of the difference in data sources, collection methodologies and timing of notification of commencements, care should be exercised in comparing quarterly data derived from monthly dwelling unit commencement statistics with the quarterly dwelling unit commencement statistics from the Building Activity Survey.

Definitions

5. A dwelling unit is defined as a self-contained suite of rooms, including cooking and bathing facilities and intended for long term residential use. Units (whether self-contained or not) within buildings offering institutional care, such as hospitals, or temporary accommodation e.g. motels, hostels and holiday apartments, are not defined as dwelling units.

6. A residential building is defined as a building predominantly consisting of one or more dwelling units. Residential buildings can be either houses or other residential buildings as follows:

- (a) A *house* is defined as a detached building predominantly used for long term residential purposes and consisting of only one dwelling unit. Thus, detached 'granny flats' and detached dwelling units (such as caretakers' residences) associated with non-residential buildings are defined as houses for the purpose of these statistics.
- (b) An *other residential building* is defined as a building which is predominantly used for long term residential purposes and which contains (or has attached to it) more than one dwelling unit (e.g. includes town-houses, duplexes, apartment buildings etc.).

7. *Commencements.* For the purposes of this statistical series, a dwelling unit is regarded as being commenced on the date when:

- (a) the residential building is first inspected by a local government or other government authority building inspector or surveyor, whether the work is passed or not. In general, the first inspection is undertaken at the foundations or footings stage of construction; or
- (b) the residential building is determined as commenced by a building inspector or surveyor.

8. *Ownership of a building* is classified as either Public Sector or Private Sector according to the sector of the intended owner of the completed building as evident at the time of approval. Residential buildings being constructed by private sector builders under government housing authority schemes whereby the authority has contracted, or intends to contract, to purchase the buildings on or before completion, are classified as public sector.

Australian Standard Geographical Classification (ASGC)

9. Area statistics are now being classified to the *Australian Standard Geographical Classification, Edition 2.5* (1216.0) and ASGC terminology has been adopted in the presentation of building statistics. Changes brought about by the (State) *Local Government Act 1993* to the titles of legal Local Government Areas (LGAs) have been incorporated in this publication.

- (a) *Statistical Local Areas (SLAs)* are in most cases either identical with, or have been aggregated to, the previously published whole or part of legal Local Government Areas (LGAs) as defined under the (State) *Local Government Act 1919* and comprising cities (C), municipalities (M) and shires (S). In other cases, they are identical to each previously published unincorporated area. The (State) *Local Government Act 1993* eliminated the titles of Shire and Municipality and instituted the concept of *Area (A)*. With one exception – Sutherland (S) became Sutherland Shire (A) – names of the LGAs have remained unaltered. In aggregate, SLAs cover the whole of the State without gaps or overlaps. In some cases legal LGAs overlap Statistical Subdivision boundaries and therefore comprise two SLAs (Part A and Part B) or three SLAs in the case of Cabonne (A) (Part A, Part B and Part C).
- (b) *Statistical Subdivisions (SSDs)*. These consist of one or more SLAs and form the intermediate size spatial unit for the presentation of regional data.
- (c) *Statistical Divisions (SDs)*. These consist of one or more Statistical Subdivisions (SSDs). Where SSDs are not shown for statistical purposes, statistical local areas are shown ordered alphabetically within statistical divisions. The divisions are designed to be relatively homogeneous regions characterised by identifiable social and economic units within the region, under the unifying influence of one or more major towns or cities.
- (d) *Statistical Districts*. To provide comparable statistics over a period of time, statistical districts have been defined around selected urban centres, with a population of 25,000 or more, experiencing urban growth beyond the legal local government area boundaries. Those districts are intended to contain the anticipated urban spread over the next 20 years. In some cases, Statistical District boundaries are identical to those of

particular Statistical Subdivisions (e.g. Newcastle SSD and Wollongong SSD included in Table 6 of this publication).

Unpublished data

10. The ABS can also make available certain dwelling unit commencement data which are not published. Where it is not practicable to provide the required information by telephone, data can be provided in the following forms: microfiche, photocopy, computer printout and clerically extracted tabulation. A charge may be made for providing unpublished information in these forms.

Related publications

11. Other ABS publications which may be of interest include:

- Building Approvals, Australia* (8731.0) – issued monthly
- Building Approvals, New South Wales* (8731.1) – issued monthly
- Building Activity, Australia: Dwelling Unit Commencements, Preliminary* (8750.0) – issued quarterly
- Building Activity, New South Wales* (8752.1) – issued quarterly
- Housing Finance for Owner Occupation, Australia* (5609.0) – issued monthly
- Price Index of Materials Used in House Building* (6408.0) – issued monthly
- Engineering Construction Survey* (8762.0) – issued quarterly

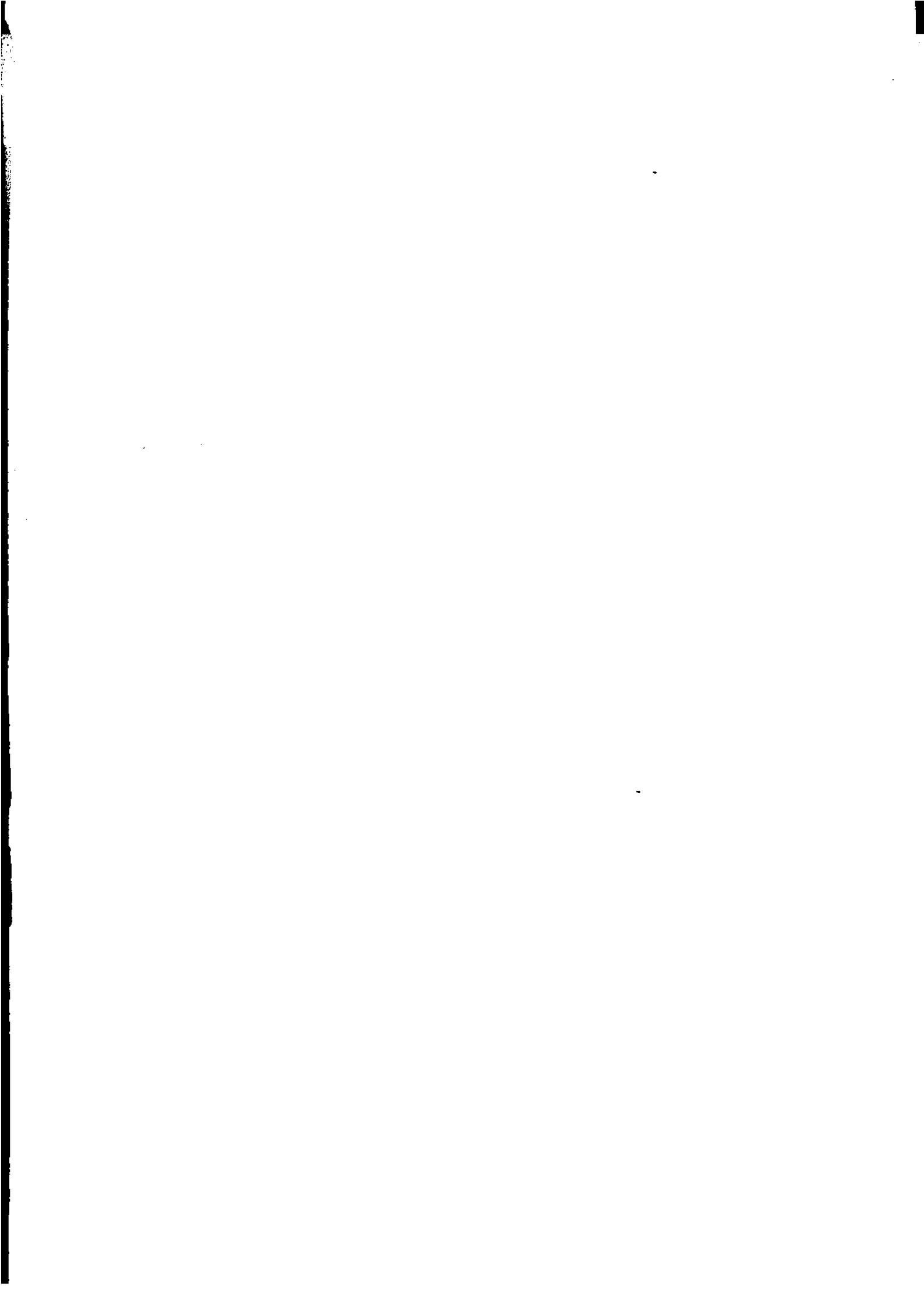
12. Current publications produced by the ABS are listed in the *Catalogue of Publications and Products, Australia* (1101.0). The ABS also issues, on Tuesdays and Fridays, a *Release Advice* (1105.0) which lists publications to be released in the next few days. The Catalogue and Release Advice are available from any ABS office.

Symbols and Other Usages

..	not applicable
—	nil or rounded to zero (including null cells)
A	Area
C	City
n.y.a.	not yet available
r	figure or series revised since previous issue
SD	Statistical Division
SLA	Statistical Local Area
SSD	Statistical Subdivision

13. Where figures have been rounded, discrepancies may occur between sums of the component items and totals.

GREGORY W. BRAY
Deputy Commonwealth Statistician



For more information . . .

The ABS publishes a wide range of statistics and other information on Australia's economic and social conditions. Details of what is available in various publications and other products can be found in the ABS Catalogue of Publications and Products available from all ABS Offices.

ABS Products and Services

Many standard products are available from ABS bookshops located in each State and Territory. In addition to these products, information tailored to the needs of clients can be obtained on a wide range of media by contacting your nearest ABS Office. The ABS also provides a Subscription Service for standard products and some tailored information services.

National Dial-a-Statistic Line

0055 86 400

Steadycom P/L: premium rate 25c/21.4 secs.

This number gives 24-hour access, 365 days a year, for a range of important economic statistics including the CPI.

Internet

<http://www.statistics.gov.au>

A wide range of ABS information is available via the Internet, with basic statistics available for each State, Territory and Australia. We also have Key National Indicators, ABS product release details and other information of general interest.

Sales and Inquiries

Keylink STAT.INFO/ABS
X.400 (C:Australia,PUB:Telememo,O:ABS,FN:STAT,SN:INFO)
Internet stat.info@abs.telememo.au

National Mail Order Service (06) 252 5249
Subscription Service 1800 02 0608

	Information Inquiries	Bookshop Sales
SYDNEY	(02) 268 4611	268 4620
MELBOURNE	(03) 9615 7755	9615 7755
BRISBANE	(07) 3222 6351	3222 6350
PERTH	(09) 360 5140	360 5307
ADELAIDE	(08) 237 7100	237 7582
HOBART	(002) 205 800	205 800
CANBERRA	(06) 252 6627	207 0326
DARWIN	(089) 432 111	432 111



Client Services, ABS, PO Box 10, Belconnen ACT 2616

